



*The
J.J. Ugland
Companies*

HLV UGLEN

HEAVY LIFT CRANE VESSEL - CRANE CAPACITY: 800 T



OWNER:

UGLAND SHIPPING AS

TECHNICAL MANAGER:

UGLAND MARINE SERVICES AS

MARKETING & OPERATOR:

UGLAND CONSTRUCTION AS

POSTAL ADDRESS:

P.O. BOX 360, N-4002 STAVANGER, NORWAY

VISITING ADDRESS:

HAAKON VII'S GT. 8, 10TH FLOOR, STAVANGER

TEL: +47-51 56 43 00

E-MAIL: UC@JJUC.NO

WEBSITE: WWW.JJUC.NO

BUILT BY:

AS NYMO

YEAR BUILT:

1978 - (CRANE UPGRADED 2014)

DESCRIPTION OF VESSEL AND EQUIPMENT

Registration:
Norwegian.

Classification:
Det Norske Veritas class + 1A1 and requirements of the Norwegian Maritime Directorate for Norwegian registration and unrestricted trade.

Dimensions:
Length overall: 78.50 metres
Breadth moulded: 26.00 metres
Draught to keels: 4.27 metres
Draught:
Max. operational draft
incl. azimuthing thrusters: 5.77 metres

Tonnages:
Gross: 3977 reg. tons
Net: 1193 reg. tons

Technical Specifications:
Propulsion units – 2 x 735 kW (2 x 1,000 BHP)
Schottel azimuthing type thrusters, driven by DC electric motors.
Transverse thrusters – 2 x 368 kW (2 x 500 BHP) with controllable pitch propellers, electrically powered by AC motors.
Electric alternators – 3 x 1070 kW, each driven by a Bergen Diesel engine.

Capacities:
Marine diesel oil: 550 m³
Fresh water: 210 m³

LIFTING CHARACTERISTICS:

Standard Boom version with jib:

Main Hooks:
Maximum lifting capacity: 719 ton
Each main hook (2 lifting hooks): 400 ton
Max. lifting height: 59 metres
Corresponding outreach: 22 metres
Auxiliary lift: 12 ton

Without jib:

Maximum lifting capacity: 800 ton
Each main hook (2 lifting hooks): 400 ton
Max. lifting height: 60 metres
Corresponding outreach: 20 metres
Auxiliary lift: 12 ton

Jib Hooks:

Maximum lifting capacity: 300 ton
Each jib hook (2 lifting hooks): 150 ton
Max. lifting height: 78 metres
Corresponding outreach: 22.5 metres
Auxiliary lift: 12 ton

Highlift boom version:

Lifting heights from 92 metres up to 156 metres and
Lifting capacity from 440 tons to 200 tons.

Winches & Deck Machinery:

6 crane winches, electric AC drive.
4 mooring/aux. hoisting winches, 12 tonnes, electric AC drive. 2 mooring winch/windlasses, 12 tonnes, electric AC drive. 1 aux./hydraulic crane, covering the main deck with a linked telescopic boom.
Capacity: 20 meter tonnes.

Anchoring Systems:

2 ship anchors, each 2,160 kgs on 220 m, 40 mm^Ø chain.
4 positioning high holding power anchors, each 3,000 kgs on 1,200 m, 40 mm^Ø wire rope.
Maximum pulling power 29 tonnes.

Instrumentation & Electronic Equipment:

Monitoring and safety equipment for crane operations according to Norwegian regulations. Navigating equipment includes radar, gyro compass//automatic pilot, echo sounder, GPS, AIS, ECS (ECDIS from 2015).

Radio Equipment:

Radio telephony station according to regulations, UHF portable radiosets for internal communication.

Accommodation:

Accommodation for a total of 17 persons in 17 single. All accommodation spaces are fully air conditioned.

Ballast System:

Remotely operated, with pump capacity: 2 x 500 m³/h.

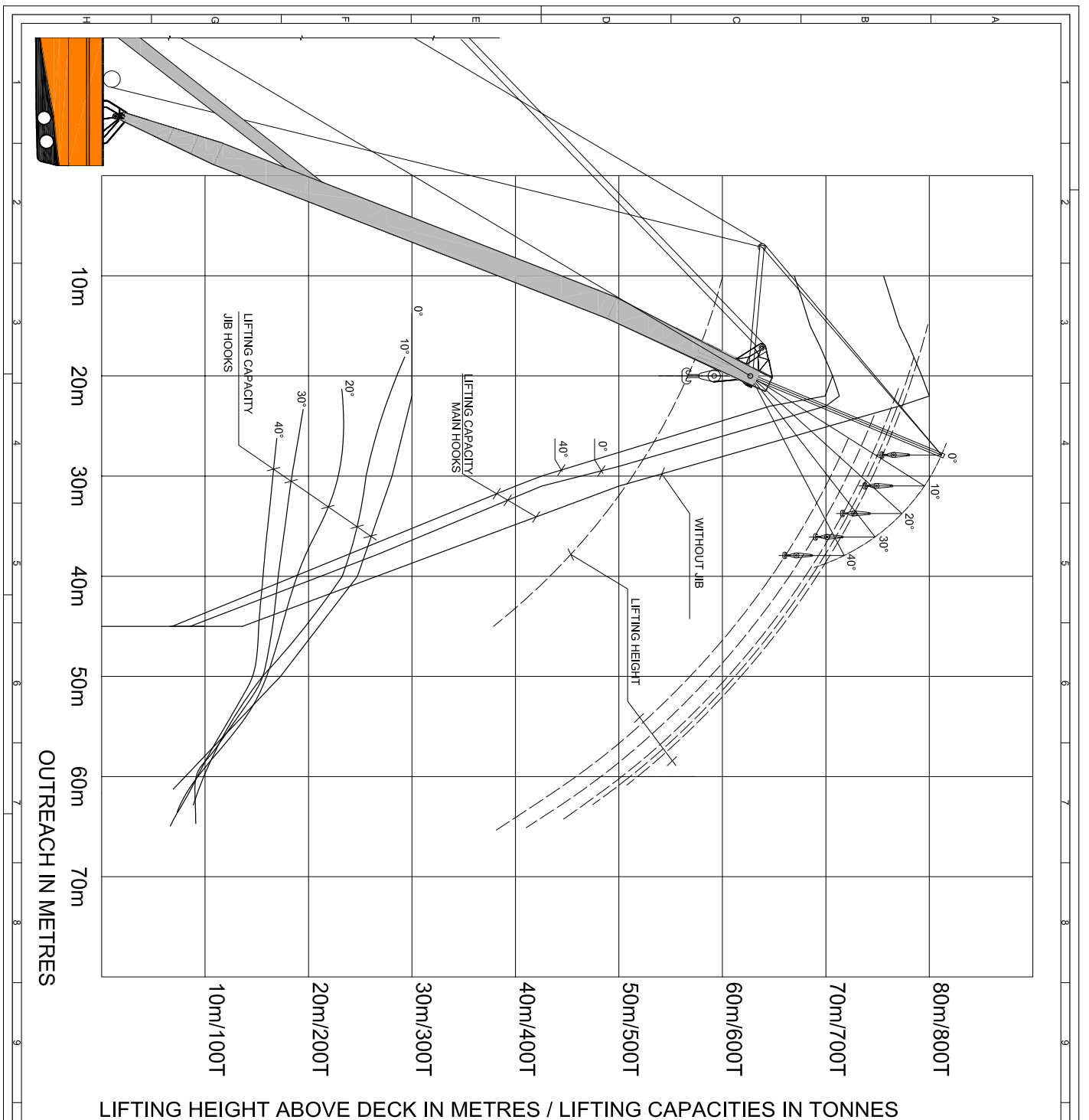
Power Supplies:

The following may be delivered:
Electric power: 440 V, 60 Hz
Compressed Air: 7.0 bar (100 P.S.I.)



Uglen with rig in transit position. At normal draft highest point will be 33 metres above sea level with jib mounted and 28 m with jib dismounted.



LIFTING CURVE HLV UGLEN 800 METRIC TON



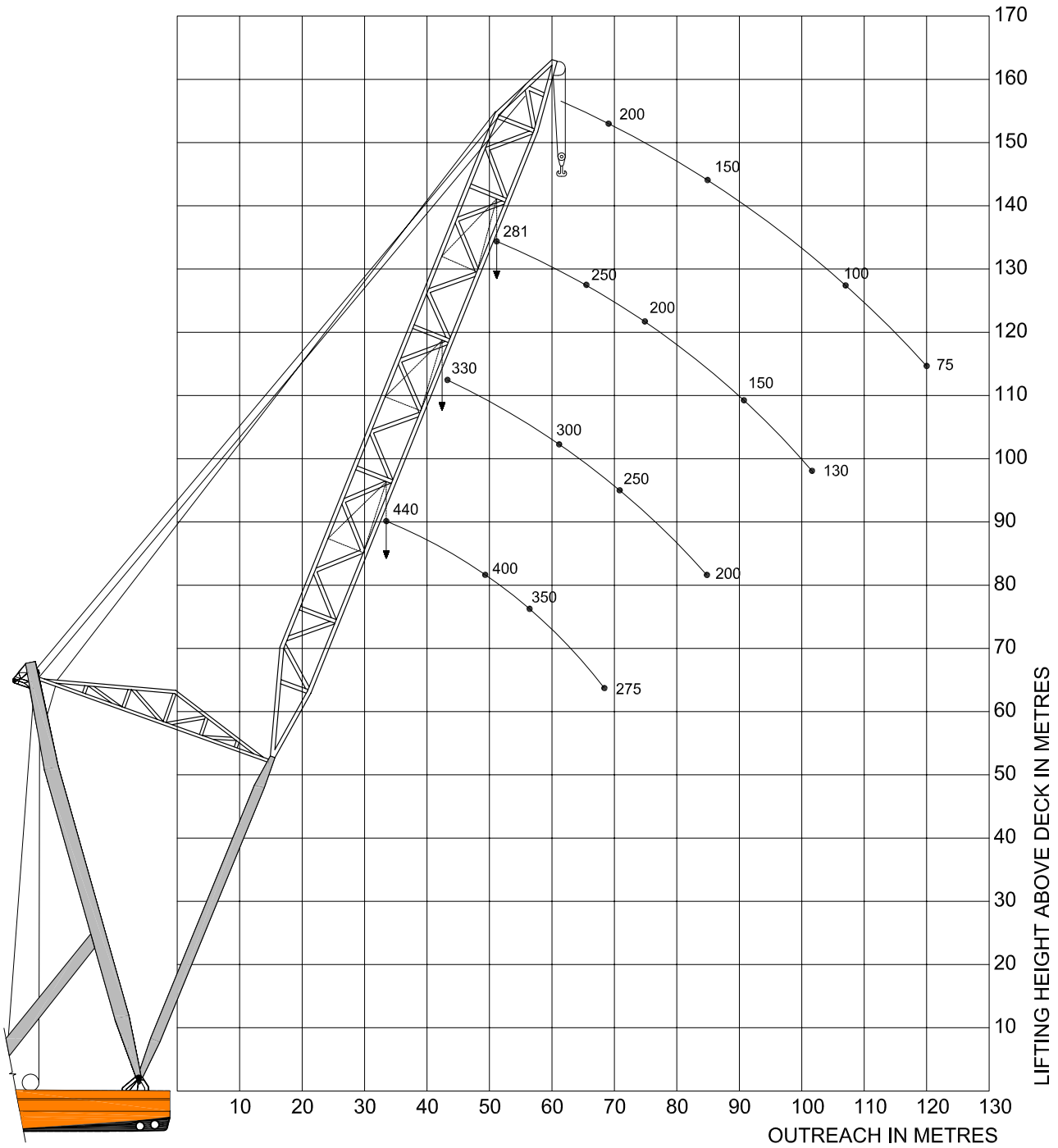
LIFTING HEIGHT ABOVE DECK IN METRES / LIFTING CAPACITIES IN TONNES

NOTES:

1. LIFTING IS RESTRICTED TO INSHORE HARBOUR LIFT, STILLWATER CONDITION.
2. MAX WIND SPEED IS 10 M/S DURING LIFTING.
3. TRIM AND HEEL DURING LIFTING:
-MAX HEEL IS 3.0 DEGREES
-MAX TRIM IS 2.0 DEGREES.
4. DESIGN DYNAMIC FACTOR 1.1.
5. FIGURES 0°, 10°, 20°, 30° AND 40° REFERS TO JIB POSITION.
6. LIFTING CAPACITY CURVES SHOWN FOR SEPARATE MAIN HOOKS OR JIB HOOKS LIFT. COMBINED LIFT WITH MAIN HOOKS AND JIB HOOKS IS GIVEN IN DRAWING 0004-0006-N-XE-200-002.
7. LIFTING CAPACITY CURVES FOR MAIN HOOKS WITHOUT JIB AND WITH JIB IN POSITION 0° IS BASED ON STRENGTH CALCULATIONS IN REPORTS 0004-0006-N-RA-200-002, REV/02, 0004-0006-N-RA-200-001, REV/00 AND STABILITY CALCULATION IN REPORT GM-0800-0070_R009_1.
8. LIFTING CAPACITY CURVES FOR MAIN HOOKS WITH JIB POSITION 40° IS BASED ON STRENGTH CALCULATIONS IN REPORT 0004-0006-N-RA-200-007, REV/01, AND STABILITY CALCULATIONS IN REPORT GM-0800-0070_R009_1.
9. JIB HOOKS LIFTING CAPACITY CURVES IS ACCORDING TO ORIGINAL LIFTING CHARACTERISTICS IN DRAWING 02.34A DATED 21/12-1979.
10. FOR LIFTS THAT ARE CLOSE TO LIFTING CAPACITY CURVES, THE STABILITY SHALL BE CHECKED IN THE ONBOARD LOADING COMPUTER FOR THE ACTUAL LOADING CONDITION USED DURING LIFTING.

			
TITLE: MAIN BOOM AND JIB		DRAWING NO.: 0800-0074-SK-002	
AUTHOR: [Name]		SCALE: 1:1	
CHECKED: [Name]		REVISION: 1	

LIFTING CHARACTERISTICS



NOTES:

- 1. H- 102m, WIND LIMITATION 9 M/S (LIFTING CAPACITY 440 TONS)
- 2. H- 126m, WIND LIMITATION 8 M/S (LIFTING CAPACITY 330 TONS)
- 3. H- 150m, WIND LIMITATION 7 M/S (LIFTING CAPACITY 281 TONS)
- 4. H- 174m, WIND LIMITATION 6 M/S (LIFTING CAPACITY 200 TONS)

GLOBAL MARITIME		CLIENT	Ugland Construction AS
HIGH LIFT BOOM		PROJECT NO.	0800-0074
AUTOSAVE FILE	PROJECT	SCALE	DRAWING NO.
08000074SK001	A1	U.M.C.	0800-0074-SK-001
			1



HiLoad Tower May 2008



The Wet Store Tyrihans project 2007