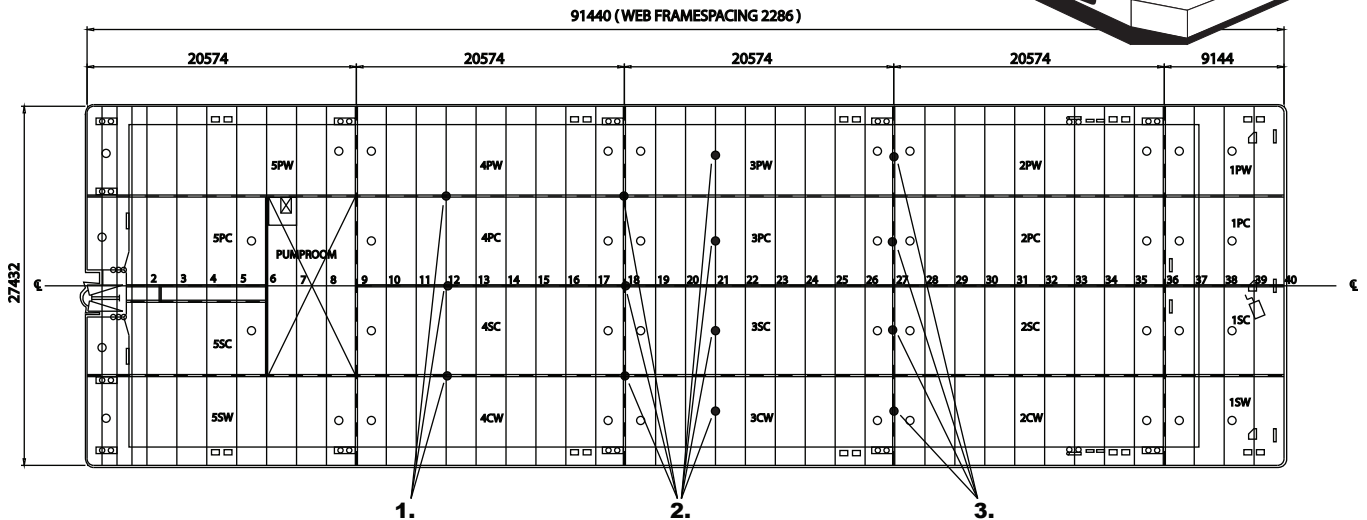
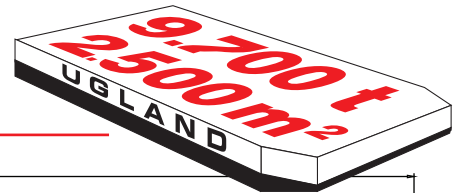
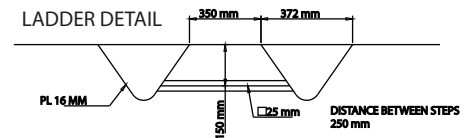
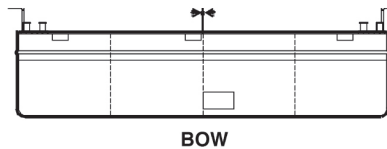
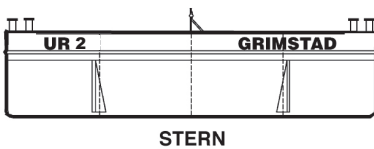
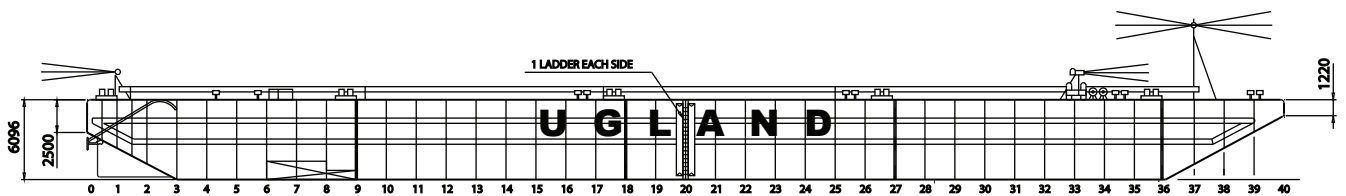


UR 2



- 1. Intersections of longitudinal bulkheads and transverse frames 200 tonnes
- 2. Intersections of longitudinal and transverse bulkheads, and anywhere on transverse frames 160 tonnes
- 3. Any stiffeners of transverse bulkheads 100 tonnes



Built: 1995 by Sevmash Yard, Severodvinsk (Russia)
 Class: Loyd's Register +100A1
 Signal letters: LK5437
 Register tonnage: 4066 gross. / 1219 net.

DIMENSIONS:
 Length overall: 300' 91,440 m
 Breadth: 90' 27,432 m
 Depth: 20' 6,096 m
 Light Draft, mid ship: 0,837 m
 Loaded draft: 4,842 m

CAPACITIES:
 Deadweight: 9742 tonnes
 Lightship: 1850 tonnes
 Deck area: 2508 sq.m
 Deck unit load: 25 tonnes/sq.m

ARRANGEMENT AND FORM:
 Bulkheads: 3 longitudinal, 4 transverse + pump room bulkhead.
 Double bottom: In pump room.
 Ballast tanks: 20
 Bow: Raked.
 Stern: Raked with two skegs.

EQUIPMENT:

Auxiliaries/pumps: SB. side John Deere 79 Kwh at 1800 RPM
 P. side Mitsubishi 72 Kwh at 1800 RPM
 2 Ballast pumps Pumpeteknik 600m³/h
 + 1 Portable el. driven submersible pump for stripping etc.

Alternator/generator: One Busck 10 kw/3x400v/50Hz.
 Lightening: 2x24 volt/115 Ah
 Solar powered navigation lights.

MOORING / TOWING:

Anchor winch: Brattvaag/Hagglund hydraulic winch
 18 tons pull / 1000 meter wire 32 mm ,
 with breaking load 704 kN
 Anchor: Type Stockless, weight 6300 kg
FOR EMERGENCY ONLY
 Retriever Winch: 5 tons manual operated.
 Towing arr.: Smit towing arrangement for main-
 and emergency towing, SWL 100 tonnes.
 Towing bridle: Chain /wire with triangel plate,
 SWL 100 tonnes.
 Bollards: Positioned on deck.
 Fenders: 2 tiers of horizontal steel fenders on
 each side.
 2 double tiers of vertical steel fenders
 on each side.