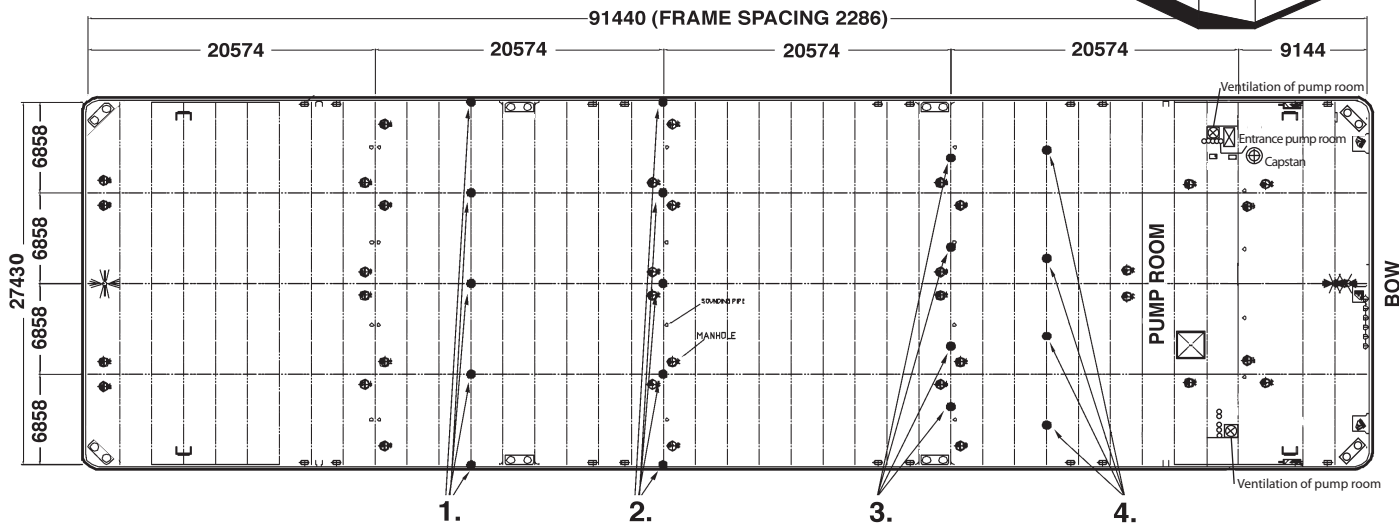
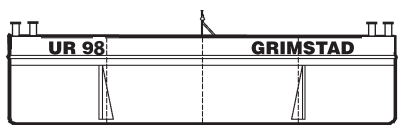
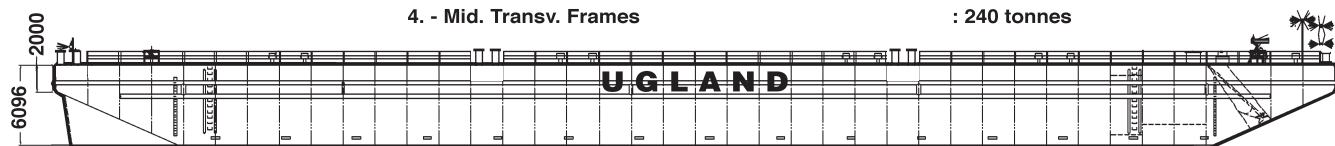


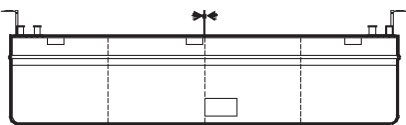
UR 98/UR 99



- POINT LOAD CAPACITY IN FOLLOWING CROSSING POINTS**
- 1. - Long. Bulkheads/Sideshell and Transv. Frames : 700 tonnes
 - 2. - Long. Bulkheads/Sideshell and Transv. Bulkheads : 200 tonnes
 - 3. - Mid. Transv. Bulkheads : 100 tonnes
 - 4. - Mid. Transv. Frames : 240 tonnes



STERN



BOW

Built: 2011 by Dalian Shipyard
 Class: Det Norske Veritas (DnV) + 1A1
 Signal letters: UR98: LG5344 / UR99: LG5345
 Reg. tonnage: 4046 gross. / 1213 net.

DIMENSIONS:
 Length overall: 300' 91,440 m
 Breadth: 90' 27,430 m
 Depth: 20' 6,096 m
 Light Draft: Fwd.: UR98: 1,200m / UR99: 1,214m
 Aft.: UR98: 0,885m / UR99: 0,867m
 Loaded draft: UR98: 4,84m / UR99: 4,84m

CAPACITIES:
 Deadweight: UR98: 9211 tonnes / UR99: 9211 tonnes
 Lightship: UR98: 2254,5 tonnes / UR99: 2250 tonnes
 Deck area: 2508 sq.m
 Deck unit load: 25 tonnes/sq.m

ARRANGEMENT AND FORM:
 Bulkheads: 3 longitudinal, 4 transverse + pump room bulkhead.
 Double bottom: In pump room.
 Ballast tanks: 20
 Bow: Raked.
 Stern: Raked with two skegs.

EQUIPMENT:
 Auxiliaries: Three water cooled John Deere diesel engines, Model HLBP 53 53kW at 1500 rpm.
 Alternator: Stamford, Type VCM274C13 400v, 68,8 kva, 1500 rpm.
 Lightening: El. light in pump room/Shore connection and battery charger
 Solar powered navigation lights.
 Ballast pumps: Two centrifugal pumps, 600 cub.m./hour, each.
 Anchor winch: Hydraulic mooring winch.
 Maker: Dalian Shipyard Tools Industry Co.

MOORING / TOWING:
 Anchor: 1 anchor, Spek M-type, 4000 kg (FOR EMERGENCY ONLY)
 Anchor wire: 610 m, dia. 38 mm.
 Towing arr.: Smit towing arrangement for main- and emergency towing, SWL 85 tonnes.
 Towing bridle: Chain /wire with triangel plate, SWL 85 tonnes.
 Bollards: Positioned on deck.
 Fenders: 2 tiers of horizontal steel fenders on each side.
 2 double tiers of vertical steel fenders on each side.